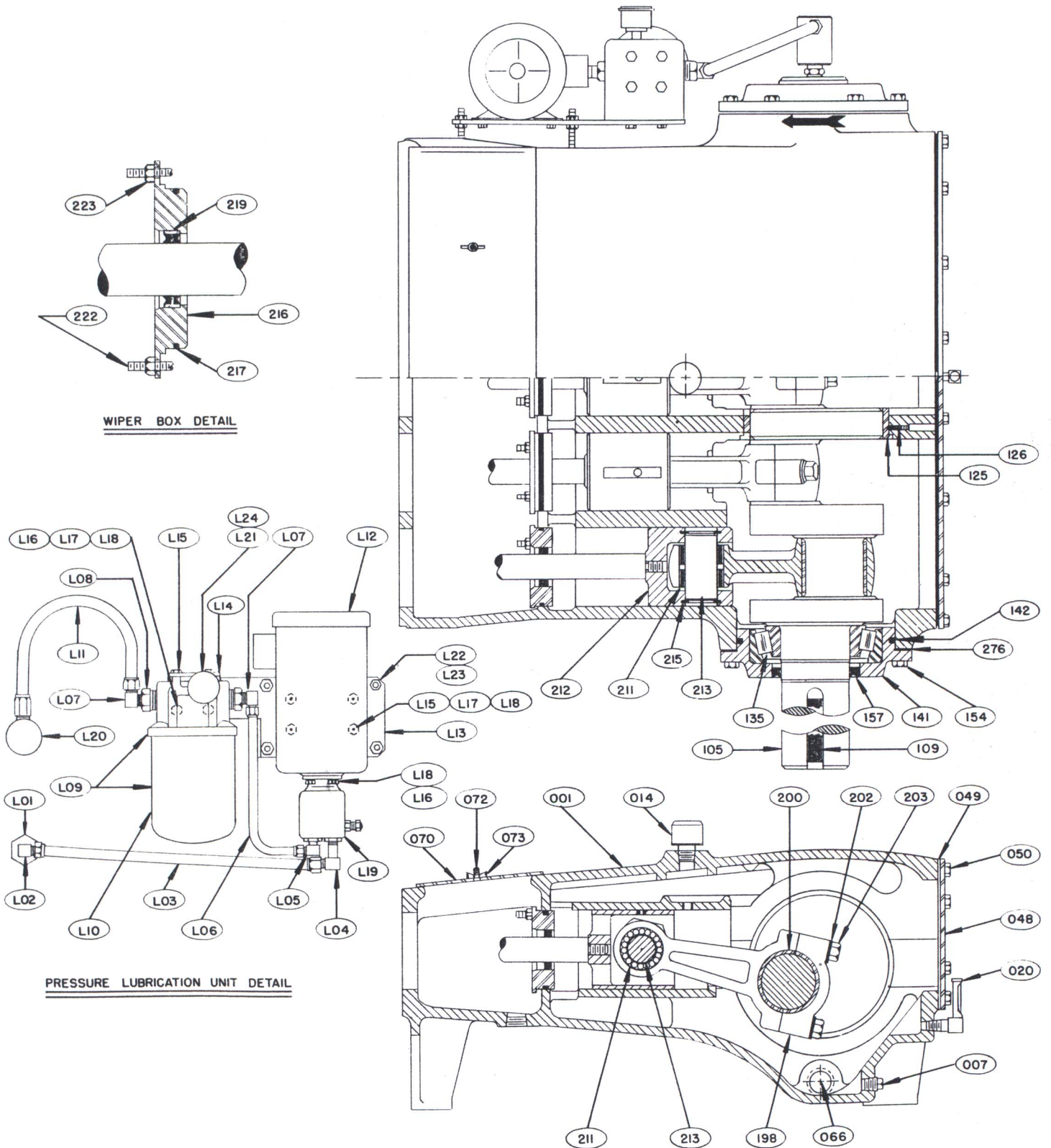


# POWER END PARTS LIST

## Q4240 QUINTUPLEX PLUNGER PUMP



**BGS Q4240 POWER END  
PARTS LIST**

| ITEM NO. | PART NUMBER  | REQ'D QTY | PART NAME            | ITEM NO.                       | PART NUMBER        | REQ'D QTY | PART NAME   |
|----------|--|-----------|----------------------|--------------------------------|--------------------|-----------|---|
| 001      | BGS 008-028321-356   | 1         | POWER FRAME          | L01                            | BGS 008-028448-001 | 1         | STRAINER  |
| 007      | BGS 170-012005-353   | 1         | PIPE PLUG, MAGNETIC  | L02                            | BGS 008-028448-002 | 1         | 90 DEG. EL  |
| 014      | BGS 001-028451-999   | 1         | FILLER-BREATHER      | L03                            | BGS 008-028448-003 | 1         | HOSE ASSEMBLY   |
| 020      | BGS 001-010803-999   | 1         | OIL LEVEL SITE GLASS | L04                            | BGS 008-028448-004 | 1         | 90 DEG. LONG EL   |
| 048      | BGS 001-024270-231   | 1         | CRANKCASE COVER      | L05                            | BGS 008-028448-005 | 1         | 90 DEG. EL  |
| 049      | BGS 001-024271-204   | 1         | CRANKCASE GASKET     | L06                            | BGS 008-028448-006 | 1         | TUBE ASSEMBLY   |
|          |  |           |                      | L07                            | BGS 008-028448-007 | 2         | 90 DEG. EL  |
| 066      | BGS 170-114003-220   | 1         | PIPE PLUG            | L08                            | BGS 008-028448-008 | 2         | BUSHING   |
| 070      | BGS 001-024269-220   | 1         | CRADLE COVER         | L09                            | BGS 008-028448-009 | 1         | FILTER HEAD & CANISTER  |
| 072      | BGS 104-038100-286   | 1         | STUD                 | L10                            | BGS 008-028448-010 | 1         | FILTER CANISTER   |
| 073      | BGS 187-038016-286   | 2         | WING NUT             | L11                            | BGS 008-028448-011 | 1         | HOSE ASSEMBLY   |
|          |  |           |                      | L12                            | BGS 008-028448-012 | 1         | ELECTRIC MOTOR (STANDARD)   |
| 105      | BGS 008-028299-348   | 1         | CRANKSHAFT           | L13                            | BGS 002-028447-001 | 1         | MOUNTING PLATE  |
| 109      | BGS 146-100900-236   | 1         | KEY                  | L14                            | BGS 002-028447-002 | 1         | MOUNTING BRACKET  |
| 125      | BGS 002-024251-999   | 2         | CENTER BEARING       | L15                            | BGS 100-516034-286 | 8         | BOLT  |
| 126      | BGS 241-038114-273   | 2         | SET SCREW            | L16                            | BGS 100-516100-286 | 6         | BOLT  |
| 135      | BGS 120-450084-999   | 2         | END BEARING          | L17                            | BGS 127-516018-286 | 6         | NUT   |
| 141      | BGS 002-028318-356   | 2         | BEARING HOUSING      | L18                            | BGS 152-516018-286 | 10        | LOCK WASHER   |
| 142      | BGS 110-000272-200   | 2         | O-RING               | L19                            | BGS 008-028448-019 | 1         | GEAR PUMP   |
| 154      | BGS 100-012134-273   | 16        | CAP SCREW            | L20                            | BGS 001-028449-999 | 1         | ROTATING UNION  |
| 157      | BGS 145-438538-999   | 2         | OIL SEAL             | L21                            | BGS 001-028516-999 | 1         | PRESSURE SWITCH/GAGE  |
|          |  |           |                      | L22                            | BGS 104-038212-286 | 4         | STUD  |
| 198      | BGS 004-028389-359   | 5         | CONNECTING ROD & CAP | L23                            | BGS 150-038016-306 | 8         | LOCK NUT  |
| 200      | BGS 002-028392-999   | 5         | SHELL BEARING        | L24                            | BGS 008-028448-024 | 1         | ADAPTER   |
| 202      | BGS 154-058108-220   | 10        | LOCK WASHER          | ** L25                         | BGS 204-000196-204 | 1         | GASKET (FOR ITEM L20)   |
| 203      | BGS 100-058314-273   | 10        | CAP SCREW            |                                |                    |           |   |
| ** 211   | BGS 001-028391-999   | 10        | ROLLER BEARING       |                                |                    |           |   |
|          | BGS 001-023129-999   | 5         | BRONZE BUSHING       |                                |                    |           |   |
|          |  |           |                      | <b>Optional Parts and Kits</b> |                    |           |   |
| 212      | BGS 004-028404-359   | 5         | CROSSHEAD            |                                |                    |           |   |
| 213      | BGS 001-028390-999   | 5         | WRIST PIN            | * 125                          | BGS 002-028504-999 | 2         | UNDERSIZE MAIN BEARING:<br>-0.040"  |
| 215      | BGS 001-028408-263   | 10        | SNAP RING            |                                |                    |           |   |
| 216      | BGS 002-028308-260   | 5         | WIPER BOX            |                                |                    |           |   |
| 217      | BGS 110-000248-201   | 5         | O-RING               | * 200                          |                    |           | UNDERSIZE SHELL BEARINGS:   |
| 219      | BGS 001-027675-999   | 5         | PONY ROD SEAL        |                                | BGS 002-028393-999 | 5         | -0.010"   |
| 222      | BGS 104-038114-286   | 10        | STUD                 |                                | BGS 002-028394-999 | 5         | -0.020"   |
| 223      | BGS 150-038016-306   | 10        | LOCK NUT             |                                | BGS 002-028395-999 | 5         | -0.040"   |
| * 263    | BGS 001-004837-282   | 1         | LUBRICATION NAMPLATE |                                |                    |           |   |
| * 264    | BGS 126-004014-405   | 4         | DRIVE SCREW          | * 1144                         | BGS 002-028407-402 | 1         | ROLLER BEARING (ITEM 211)<br>INSTALLATION/REMOVAL TOOL  |
| 276      | BGS 998-Q42400-037   | 1         | SWIM GASKET KIT      |                                |                    |           |   |
|          |  |           |                      | * 2122                         | BGS 998-Q42400-005 | 5         | CONNECTING ROD & CROSSHEAD<br>ASSEMBLY (CONSISTS OF ITEMS:<br>198, 202, 203, 211, 212,<br>213, & 215) W/NEEDLE BEARINGS |
|          |  |           |                      | * T215                         | BGS 001-028505-999 | 1         | SNAP RING (ITEM 215) PLIERS   |
|          |  |           |                      | * 9030                         | BGS 998-Q42400-010 | 1         | PACKING LUBRICATOR KIT (LHD)  |
|          |  |           |                      |                                | BGS 998-Q42400-011 | 1         | PACKING LUBRICATOR KIT (RHD)  |
|          |  |           |                      | * 9049                         | BGS 998-Q42400-036 | 5         | WIPER BOX KIT (CONSISTS OF<br>ITEMS: 216, 217, 219, 222 & 223)  |
| * -      | NOT SHOWN  |           |                      | * 9050                         | BGS 998-Q42400-038 | 1         | POWER END GASKET KIT<br>(CONSISTS OF ITEMS: 049, 142,<br>157, 217& 276)   |
| ** -     | BRONZE BUSHING RECOMMENDED ON ALL WATER APPLICATIONS AND NORMAL<br>SUCTION HEAD CONDITIONS |           |                      |                                |                    |           |   |

NOTE: WHEN ORDERING PARTS, GIVE:

- |                       |                |
|-----------------------|----------------|
| 1) PUMP SERIAL NUMBER | 4) QUANTITY    |
| 2) PUMP MODEL NUMBER  | 5) PART NAME   |
| 3) PART NUMBER        | 6) ITEM NUMBER |