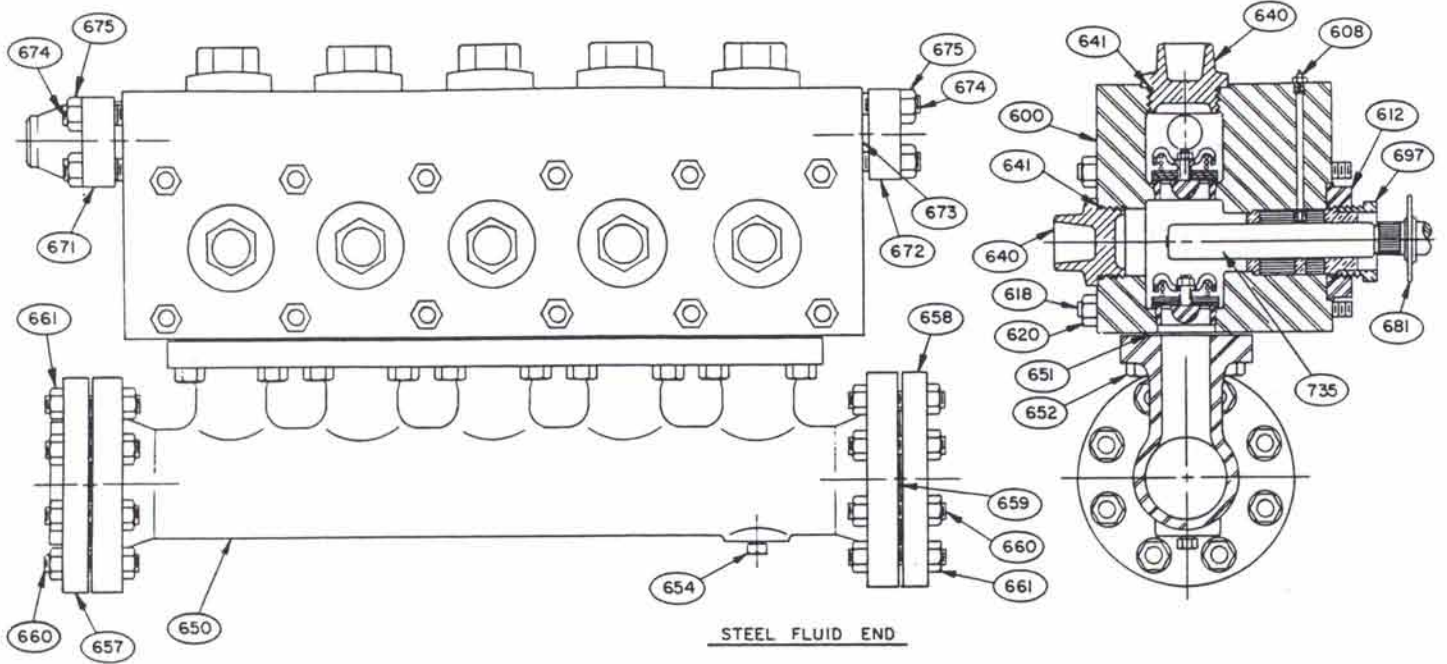
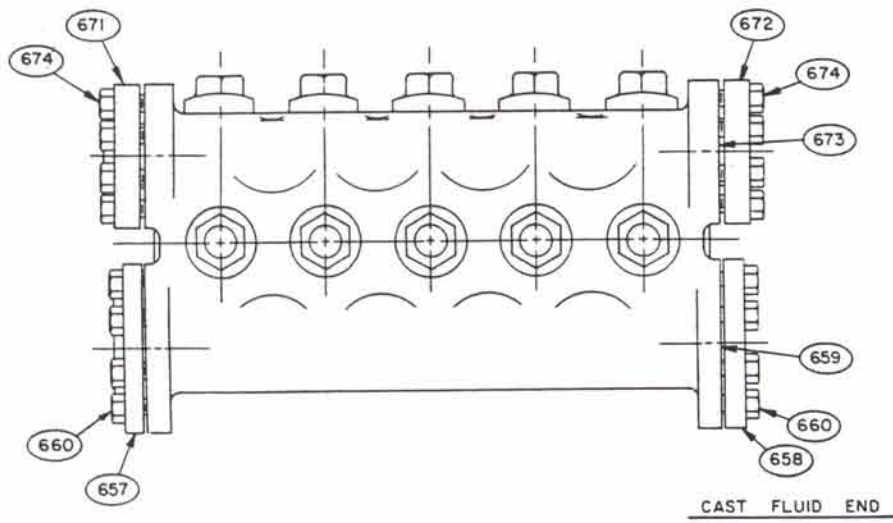


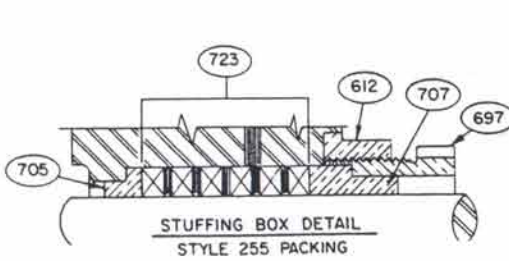
FIG. HP-165M FLUID END
 $1\frac{5}{8}'' - 2\frac{1}{2}'' \times 4\frac{1}{2}''$ QUINTUPLEX PLUNGER PUMP



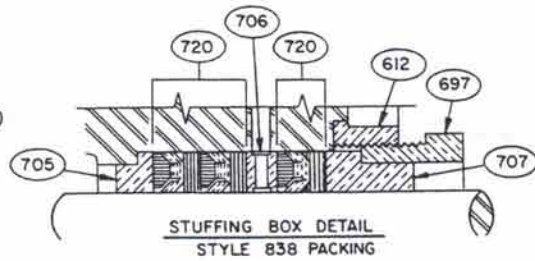
STEEL FLUID END



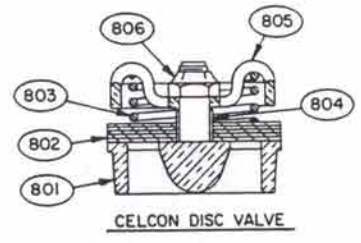
CAST FLUID END



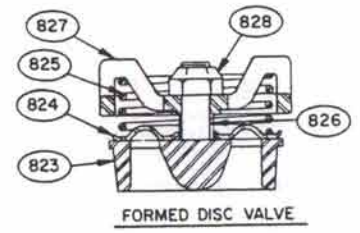
STUFFING BOX DETAIL
STYLE 255 PACKING



STUFFING BOX DETAIL
STYLE 838 PACKING



CELCON DISC VALVE



FORMED DISC VALVE

**BGS MODEL HP-165M
FLUID END PARTS LIST**

ITEM NO.	PART NUMBER	REQ'D QTY	PART DESCRIPTION
001	BGS 008-024179-350	1	POWER FRAME
007	BGS 170-012005-353	1	PIPE PLUG, MAGNETIC
014	BGS 001-013059-999	1	FILTER/BREATHER CAP
020	BGS 001-010803-999	1	OIL LEVEL SITE GLASS
* 040	BGS 001-023575-282	1	EXTENSION GUARD
* 041	BGS 154-014049-220	2	LOCK WASHER
* 042	BGS 113-014038-220	2	MACHINE SCREW
048	BGS 001-024270-231	1	CRANKCASE COVER
049	BGS 001-024271-204	1	CRANKCASE GASKET
050	BGS 100-038034-286	16	CAP SCREW
066	BGS 170-114003-220	1	PIPE PLUG
070	BGS 001-024269-220	1	CRADLE COVER
072	BGS 104-038100-286	1	STUD
073	BGS 187-038016-286	2	WING NUT
105	BGS 008-024182-351	1	CRANKSHAFT
109	BGS 146-034500-236	1	KEY
125	BGS 002-024251-999	2	CENTER MAIN BEARING
126	BGS 241-038114-273	2	SET SCREW
135	BGS 120-325066-999	2	** END MAIN BEARING
141	BGS 002-023230-359	2	BEARING HOUSING
142	BGS 110-000272-200	2	O-RING
154	BGS 100-058112-286	12	CAP SCREW
157	BGS 145-318418-999	2	OIL SEAL
198	BGS 004-023120-359	5	CONNECTING ROD & CAP
200	BGS 002-028392-999	5	SHELL BEARING
202	BGS 154-058108-220	10	LOCK WASHER
203	BGS 100-058314-273	10	CAP SCREW
211	BGS 001-023129-302	10	BRONZE BUSHING
212	BGS 004-023127-359	5	CROSSHEAD
213	BGS 001-023128-236	5	WRIST PIN
216	BGS 002-025366-237	5	WIPER BOX
217	BGS 110-000248-201	5	O-RING
219	BGS 145-158238-999	15	PONY ROD SEAL
221	BGS 002-025365-231	5	* GLAND
222	BGS 104-038134-286	10	STUD
223	BGS 150-038016-306	10	LOCK NUT
* 263	BGS 001-004837-282	1	LUBRICATION NAMPLATE
* 264	BGS 126-004014-405	4	DRIVE SCREW
276	BGS 998-810000-037	1	SHIM GASKET KIT

**BGS MODEL HP-165M
FLUID END PARTS LIST**

<u>ITEM NO.</u>	<u>PART NUMBER</u>	<u>REQ'D QTY</u>	<u>PART DESCRIPTION</u>
OPTIONAL PARTS AND KITS			
* 125	BGS 002-028504-999	2	MAIN BEARING (0.040" UNDERSIZE)
* 220	BGS 002-028393-999	5	SHELL BEARINGS: (0.010" UNDERSIZE)
	BGS 002-028394-999	5	(0.020" UNDERSIZE)
	BGS 002-028395-999	5	(0.040" UNDERSIZE)
* 2122	BGS 0998-81000-002	5	CONNECTING ROD KIT (CONSISTS OF ITEM: 198, 202, 203, 211)
* 9030	BGS 998-816500-010	1	PACKING LUBRICATOR KIT (LHD)
* 9031	BGS 998-816500-011	1	PACKING LUBRICATOR KIT (RHD)
* 9049	BGS 998-810000-036	5	WIPER BOX KIT (CONSISTS OF TIEMS: 221, 222 & 223)
* 9050	BGS 998-816500-038	1	POWER END GASKET KIT (CONSISTS OF ITEMS: 049 157, 217 & 276)

* NOT SHOWN ON PARTS DRAWING

** OMIT WHEN PACKING
LUBRICATOR IS USED

NOTE: WHEN ORDERING PARTS,
GIVE:

- 1) PUMP SERIAL NUMBER
- 2) PUMP MODEL NUMBER
- 3) PART NUMBER
- 4) QUANTITY
- 5) PART NAME
- 6) ITEM NUMBER

**BGS HP-165M FLUID END
PARTS LIST
1-5/8"- 2-1/2" x 4-1/2" QUINTUPLEX PLUNGER PUMP**

ITEM NO.	PART NUMBER	MATL. AVAIL.	QTY	PART DESCRIPTION
===== FLUID END =====				
600	BGS 008-024876-220	S	1	FLUID END BODY
	BGS 008-024255-XXX	B, D	1	FLUID END BODY
608	BGS 180-165000-220	-	5	LUBRICATION FITTING
612	BGS 001-023574-XXX	B, S	5	ADAPTER, F.E./P.E.
618	BGS 104-034234-271	-	12	STUD (Bbz. & Ductile F.E.)
	BGS 253-034125-271	-	12	STUD (Steel F.E.)
* 619	BGS 189-034112-220	-	12	WASHER (Brz. & Ductile F.E.)
620	BGS 133-034010-243	-	12	NUT
640	BGS 002-023549-XXX	B, D	10	CYLINDER HEAD
641	BGS 204-000005-206	-	10	GASKET
650	BGS 008-024256-220	-	1	SUCTION MANIFOLD-----
651	BGS 204-000166-206	-	5	GASKET (Steel F.E.)
652	BGS 100-100200-273	-	20	CAP SCREW -----
654	BGS 170-034002-405	-	1	PLUG
681	BGS 001-007986-201	-	5	BAFFLE DISC
* 685	BGS 001-024329-282	-	1	NAME PLATE
* 686	BGS 126-004014-220	-	4	DRIVE SCREW
* 693	BGS 002-022780-353	D	1	SPANNER WRENCH

===== SUCTION COMPANION FLANGES =====				
** 657	BGS 190-040301-250	-	1	FLANGE, SLIP-ON
** 658	BGS 192-040301-250	-	1	BLIND FLANGE
659	BGS 204-000047-206	-	2	GASKET
660	BGS 100-034214-273	-	16	CAP SCREW (Brz. Or Ductile F.E.)
	BGS 104-034414-271	-	16	STUD (Steel F.E.)
661	BGS 133-034010-243	-	32	NUT (Steel F.E.)

DISCHARGE COMPANION FLANGES; Steel Fluid End

** 671	BGS 002-024878-250	-	1	FLANGE, WELD NECK
** 672	BGS 002-024889-250	-	1	BLIND FLANGE
673	BGS 001-010141-200	-	2	GASKET
674	BGS 104-078400-271	-	8	STUD
675	BGS 133-078009-243	-	8	NUT

DISCHARGE COMPANION FLANGES; Brz. Or Ductile F.E.

** 671	BGS 190-021501-250	-	1	FLANGE, SLIP-ON
** 672	BGS 192-021501-250	-	1	BLIND FLANGE
673	BGS 204-000030-206	-	2	GASKET
674	BGS 100-078234-273	-	16	CAP SCREW

===== STUFFING BOX GLAND NUT =====

697	BGS 002-007977-XXX	B	5	GLAND NUT
	BGS 001-007977-XXX	D	5	GLAND NUT

===== THROAT BUSHING =====

705	BGS 001-023662-XXX	B, S	5	1-5/8" THROAT BUSHING
	BGS 001-010897-XXX	B, S	5	1-3/4" THROAT BUSHING
	BGS 001-010899-XXX	B, S	5	1-7/8" THROAT BUSHING
	BGS 001-010901-XXX	B, S	5	2" THROAT BUSHING
	BGS 001-010902-XXX	B, S	5	2-1/8" THROAT BUSHING
	BGS 001-007979-XXX	B, S	5	2-1/4" THROAT BUSHING
	BGS 001-025819-XXX	B, S	5	2-1/2" THROAT BUSHING

===== LANTERN RING =====

706	BGS 001-014457-XXX	B, S	5	1-5/8" LANTERN RING
	BGS 001-010990-XXX	B, S	5	1-3/4" LANTERN RING
	BGS 001-014457-XXX	B, S	5	1-7/8" LANTERN RING
	BGS 001-010991-XXX	B, S	5	2" LANTERN RING

ITEM NO.	PART NUMBER	MATL. AVAIL.	REQ'D QTY	PART DESCRIPTION
===== PACKING SET STYLE 255 =====				
723	BGS 288-158314-395	-	5	1-5/8" PACKING
	BGS 288-134318-395	-	5	1-3/4" PACKING
	BGS 288-178331-395	-	5	1-7/8" PACKING
	BGS 288-200300-395	-	5	2" PACKING
	BGS 288-218314-395	-	5	2-1/8" PACKING
	BGS 288-214338-395	-	5	2-1/4" PACKING
	BGS 288-212278-395	-	5	2-1/2" PACKING
* 715	BGS 170-018002-220	-	5	PLUG (Replaces Lube Fitting When Using Style 255 Packing)
===== PLUNGERS =====				
735	BGS 002-024434-999	-	5	1-5/8" WHEATALOY PLUNGER
	BGS 002-024435-999	-	5	1-3/4" WHEATALOY PLUNGER
	BGS 002-024436-999	-	5	1-7/8" WHEATALOY PLUNGER
	BGS 002-024437-999	-	5	2" WHEATALOY PLUNGER
	BGS 002-024438-999	-	5	2-1/8" WHEATALOY PLUNGER
	BGS 002-024439-999	-	5	2-1/4" WHEATALOY PLUNGER
	BGS 002-024441-999	-	5	2-1/2" WHEATALOY PLUNGER
736	BGS 002-0244693-999	-	5	1-5/8" CERAMIC PLUNGER
	BGS 002-024694-999	-	5	1-3/4" CERAMIC PLUNGER
	BGS 002-024695-999	-	5	1-7/8" CERAMIC PLUNGER
	BGS 002-024696-999	-	5	2" CERAMIC PLUNGER
	BGS 002-024697-999	-	5	2-1/8" CERAMIC PLUNGER
	BGS 002-024698-999	-	5	2-1/4" CERAMIC PLUNGER
	BGS 002-024699-999	-	5	2-1/2" CERAMIC PLUNGER

===== VALVES =====

Celcon Disc Stainless Steel

800	BGS 998-016300-017	-	10	COMPLETE VALVE ASSEMBLY
Valve Assembly Includes The Following Items:				
801	BGS 001-008245-263	SS	1	SEAT
802	BGS 001-010937-320	-	1	DISC
803	BGS 001-008734-362	-	1	SPRING
804	BGS 186-170058-263	SS	1	SLEEVE
805	BGS 002-005735-263	SS	1	STAINER
806	BGS 150-012013-263	SS	1	NUT

Formed Disc, Stainless Steel

822	BGS 998-810013-018	-	10	COMPLETE VALVE ASSEMBLY
Valve Assembly Includes The Following Items:				
823	BGS 001-008245-263	SS	1	SEAT
824	BGS 001-009014-263	SS	1	DISC
825	BGS 001-009353-362	-	1	SPRING
826	BGS 186-170038-263	SS	1	SLEEVE
827	BGS 001-009352-263	SS	1	RETAINER
828	BGS 150-012013-263	SS	1	NUT

===== OPTIONAL EQUIPMENT =====

* 889	BGS 001-027584-999	-	1	CYLINDER HEAD WRENCH
* 890	BGS 998-810013-049	-	1	VALVE SEAT PULLER FOR ITEM 801 AND 823

Last Three Digits XXX

On Parts with Optional Materials, Where XXX is Shown, Replace XXX with the Following Digits For:

**BGS HP-165M FLUID END
PARTS LIST
1-5/8"- 2-1/2" x 4-1/2' QUINTUPLEX PLUNGER PUMP**

ITEM NO.	PART NUMBER	MATL. AVAIL.	QTY	PART DESCRIPTION
	BGS 001-014456-XXX	B, S	5	2-1/8" LANTERN RING
	BGS 001-010266-XXX	B, S	5	2-1/4" LANTERN RING
	BGS 001-010904-XXX	B, S	5	2-1/2" LANTERN RING

===== FOLLOWER =====

707	BGS 001-023661-XXX	B, S	5	1-5/8" FOLLOWER
	BGS 001-010933-XXX	B, S	5	1-3/4" FOLLOWER
	BGS 001-014459-XXX	B, S	5	1-7/8" FOLLOWER
	BGS 001-010931-XXX	B, S	5	2" FOLLOWER
	BGS 001-014458-XXX	B, S	5	2-1/8" FOLLOWER
	BGS 001-007983-XXX	B, S	5	2-1/4" FOLLOWER
	BGS 001-008745-XXX	B, S	5	2-1/2" FOLLOWER

===== PACKING SET STYLE 838 =====

720	BGS 181-158253-370	-	5	1-5/8" PACKING
	BGS 181-134244-370	-	5	1-3/4" PACKING
	BGS 181-178244-370	-	5	1-7/8" PACKING
	BGS 181-200214-370	-	5	2" PACKING
	BGS 181-218214-370	-	5	2-1/8" PACKING
	BGS 181-214214-370	-	5	2-1/4" PACKING
	BGS 192-212218-370	-	5	2-1/2" PACKING

ITEM NO.	PART NUMBER	MATL. REQ'D AVAIL.	QTY	PART DESCRIPTION
				Steel ----- Use <u>220</u>
				Bronze ----- Use <u>306</u>
				Ductile ----- Use <u>353</u>
				Stainless Steel ---- Use <u>263</u>

Material Available

- B - Bronze
- D - Ductile Iron
- B - Steel
- SS - Stainless Steel
- No Material Selection Necessary

* Not Shown on Parts Drawing

** Flanges Listed are Standard: for Other Type Flanges, consult Factory

Note: When Ordering Parts, Give:

- | | |
|-----------------------|----------------|
| 1) Pump Serial Number | 5) Part Name |
| 2) Pump Model Number | 6) Item Number |
| 3) Part Number | 7) Trim Size |
| 4) Quantity | 8) Material |