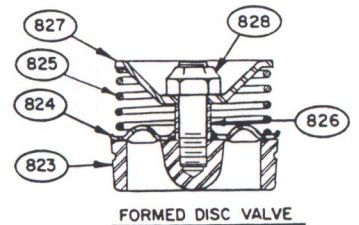
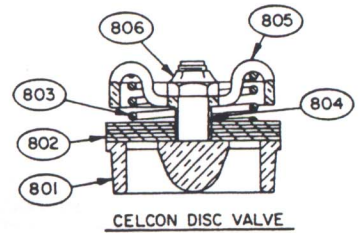
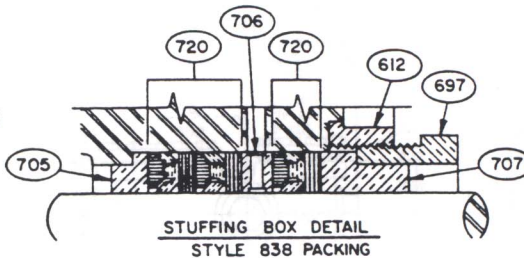
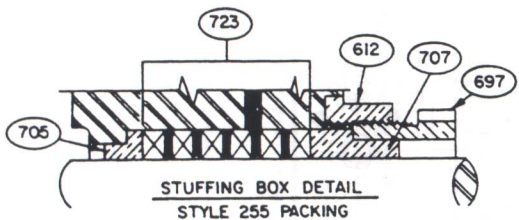
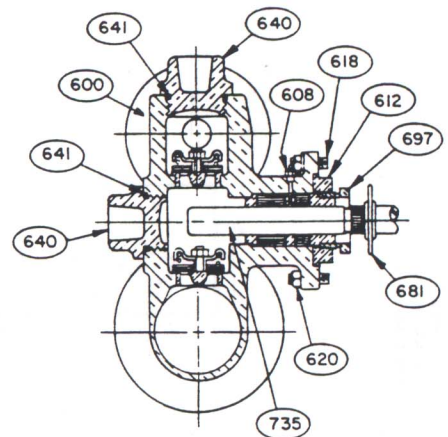
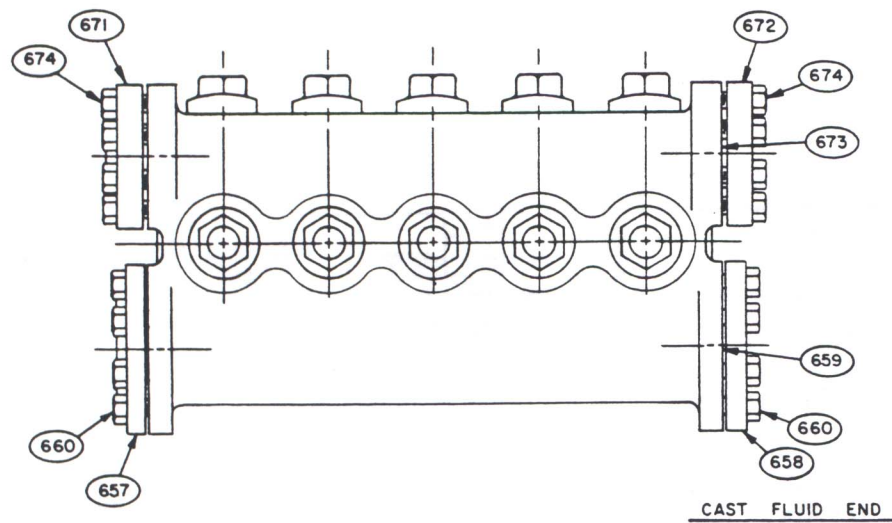
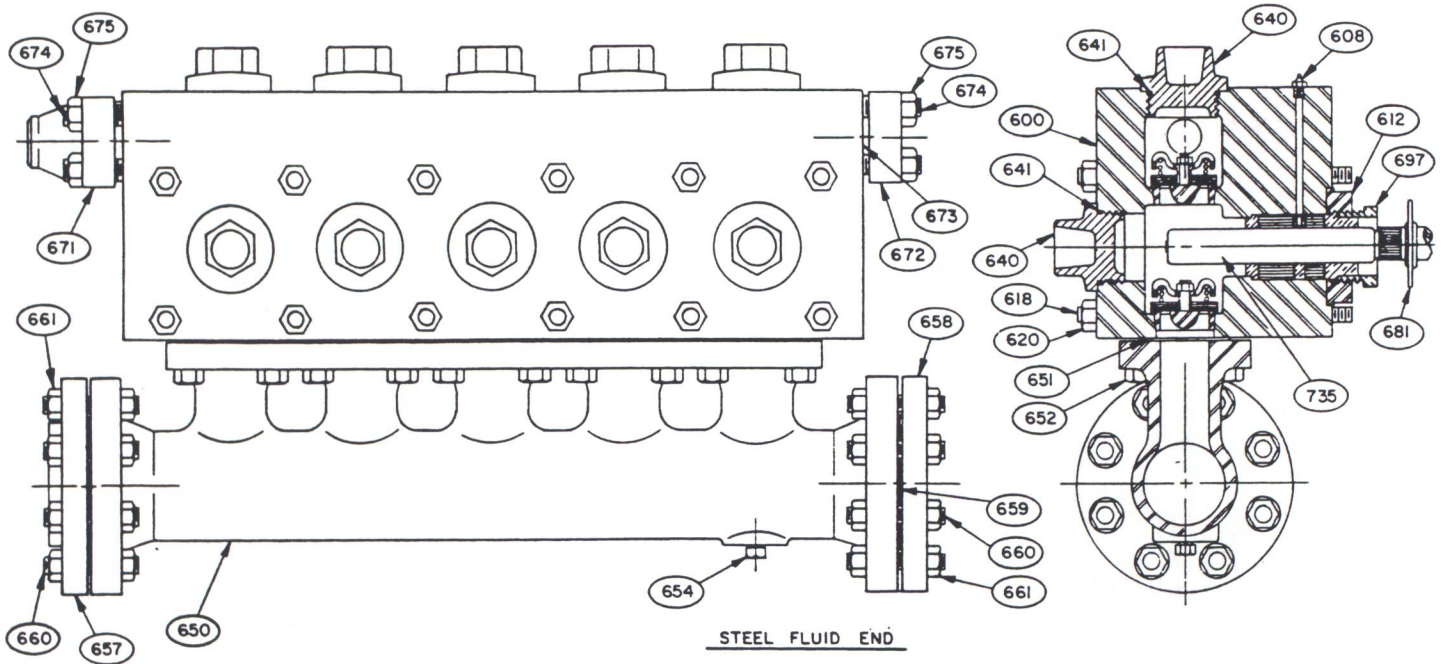


FIG. HP-165L FLUID END

2 3/4" - 3 3/8" x 4 1/2" QUINTUPLEX PLUNGER PUMP



**BGS HP-165L FLUID END
PARTS LIST
2-3/4" - 3-3/8" X 4-1/2" QUINTUPLEX PLUNGER PUMP**

ITEM NO.	PART NUMBER	MATL. AVAIL.	QTY	PART DESCRIPTION	ITEM NO.	PART NUMBER	MATL. AVAIL.	REQ'D QTY	PART DESCRIPTION
===== FLUID END =====					===== P L U N G E R S =====				
600	BGS 008-025004-220	S	1	FLUID END BODY	735	BGS 002-024961-999	-	5	2-3/4" WHEATALOY PLUNGER
	BGS 008-025003-XXX	B, D	1	FLUID END BODY		BGS 002-024962-999	-	5	3" WHEATALOY PLUNGER
608	BGS 180-165000-220	-	5	LUBRICATION FITTING		BGS 002-024963-999	-	5	3-1/4" WHEATALOY PLUNGER
612	BGS 001-024959-XXX	B, S	5	ADAPTER, F. E. / P. E.		BGS 002-024964-999	-	5	3-3/8" WHEATALOY PLUNGER
618	BGS 104-034234-271	-	12	STUD (BRZ. & DUCTILE F.E.)					
	BGS 253-034135-271	-	12	STUD (STEEL F. E.)	* 736	BGS 002-024965-999	-	5	2-3/4" CERAMIC PLUNGER
* 619	BGS 189-034112-220	-	12	WASHER (BRZ. & DUCTILE F. E.)		BGS 002-024966-999	-	5	3" CERAMIC PLUNGER
620	BGS 133-034010-243	-	12	NUT		BGS 002-024967-999	-	5	3-1/4" CERAMIC PLUNGER
640	BGS 002-012800-XXX	B, D	10	CYLINDER HEAD		BGS 002-024968-999	-	5	3-3/8" CERAMIC PLUNGER
641	BGS 204-000104-206	-	10	GASKET	===== V A L V E S =====				
650	BGS 008-025006-220	-	1	SUCTION MANIFOLD-----	<u>Celcon Disc Stainless Steel</u>				
651	BGS 204-000104-206	-	5	SEAL (STEEL F.E.)	800	BGS 998-016300-013	-	10	COMPLETE VALVE ASSEMBLY
652	BGS 100-034200-273	-	20	CAP SCREW	Valve Assembly Includes The Following Items:				
654	BGS 170-034002-405	-	1	PLUG	801	BGS 001-003591-263	SS	1	SEAT
681	BGS 001-007986-201	-	5	BAFFLE DISC	802	BGS 001-010937-320	-	1	DISC
* 685	BGS 001-025011-282	-	1	NAME PLATE	803	BGS 001-008734-362	-	1	SPRING
* 686	BGS 126-004014-220	-	4	DRIVE SCREW	804	BGS 186-170058-263	SS	1	SLEEVE
* 693	BGS 002-025720-231	-	1	SPANNER WRENCH	805	BGS 002-005735-263	SS	1	RETAINER
===== SUCTION COMPANION FLANGES =====					806	BGS 150-012013-263	SS	1	NUT
** 657	BGS 190-060151-250	-	1	FLANGE, SLIP-ON	822 BGS 998-016331-031 - 10 COMPLETE VALVE ASSEMBLY				
** 658	BGS 192-060151-250	-	1	BLIND FLANGE	Valve Assembly Includes The Following Items:				
659	BGS 204-000054-206	-	2	GASKET	823	BGS 001-021146-263	SS	1	SEAT
660	BGS 100-034200-273	-	16	CAP SCREW (BRZ. OR DUCTILE F.E.)	824	BGS 001-021142-263	SS	1	DISC
	BGS 104-034400-271	-	16	STUD (STEEL F. E.)	825	BGS 001-021144-362	-	1	SPRING
661	BGS 133-034010-243	-	32	NUT (STEEL F. E.)	826	BGS 001-021145-263	SS	1	SLEEVE
DISCHARGE COMPANION FLANGES; STEEL FLUID END					827	BGS 001-021143-263	SS	1	RETAINER
** 671	BGS 002-024957-250	-	1	FLANGE, WELD NECK	828	BGS 150-012013-263	SS	1	NUT
** 672	BGS 002-024958-250	-	1	BLIND FLANGE	829	BGS 102-012218-263	SS	1	STUD
673	BGS 001-024960-200	-	2	GASKET	===== O P T I O N A L E Q U I P M E N T =====				
674	BGS 104-034234-271	-	8	STUD	* 889	BGS 001-027585-999	-	1	CYLINDER HEAD WRENCH
675	BGS 133-034010-243	-	8	NUT	* 890	BGS 998-016330-017	-	1	VALVE SEAT PULLER FOR ITEM 801 AND 823
DISCHARGE COMPANION FLANGES; BRZ. OR DUCTILE F.E.					<u>Formed Disc, Stainless Steel</u>				
** 671	BGS 190-030601-250	-	1	FLANGE, SLIP-ON	822	BGS 998-810013-018	-	10	COMPLETE VALVE ASSEMBLY
** 672	BGS 192-030601-250	-	1	BLIND FLANGE	Valve Assembly Includes The Following Items:				
673	BGS 001-024960-200	-	2	GASKET	823	BGS 001-008245-263	SS	1	SEAT
674	BGS 104-034234-271	-	8	STUD	824	BGS 001-009014-263	SS	1	DISC
675	BGS 133-034010-243	-	8	NUT	825	BGS 001-009353-362	-	1	SPRING
DISCHARGE COMPANION FLANGES; BRZ. OR DUCTILE F.E.					826	BGS 186-170038-263	SS	1	SLEEVE
** 671	BGS 190-030601-250	-	1	FLANGE, SLIP-ON	827	BGS 001-009352-263	SS	1	RETAINER
** 672	BGS 192-030601-250	-	1	BLIND FLANGE	828	BGS 150-012013-263	SS	1	NUT
673	BGS 204-000034-206	-	2	GASKET	===== O P T I O N A L E Q U I P M E N T =====				
674	BGS 100-034212-273	-	16	CAP SCREW	* 889	BGS 001-027585-999	-	1	CYLINDER HEAD WRENCH
===== STUFFING BOX GLAND NUT =====					* 890	BGS 998-016330-017	-	1	VALVE SEAT PULLER FOR ITEM 801 AND 823
697	BGS 001-014155-XXX	B, D	5	GLAND NUT	<u>Formed Disc, Stainless Steel</u>				
===== T H R O A T B U S H I N G =====					822	BGS 998-810013-018	-	10	COMPLETE VALVE ASSEMBLY
705	BGS 001-024973-XXX	B, S	5	2-3/4" THROAT BUSHING	Valve Assembly Includes The Following Items:				
	BGS 001-025961-XXX	B, S	5	3" THROAT BUSHING	823	BGS 001-008245-263	SS	1	SEAT
	BGS 001-025962-XXX	B, S	5	3-1/4" THROAT BUSHING	824	BGS 001-009014-263	SS	1	DISC
	BGS 001-024976-XXX	B, S	5	3-3/8" THROAT BUSHING	825	BGS 001-009353-362	-	1	SPRING
===== L A N T E R N R I N G =====					826	BGS 186-170038-263	SS	1	SLEEVE
706	BGS 001-024972-XXX	B, S	5	2-3/4" LANTERN RING	827	BGS 001-009352-263	SS	1	RETAINER
	BGS 001-011195-XXX	B, S	5	3" LANTERN RING	828	BGS 150-012013-263	SS	1	NUT
	BGS 001-011197-XXX	B, S	5	3-1/4" LANTERN RING	===== O P T I O N A L E Q U I P M E N T =====				
	BGS 001-024975-XXX	B, S	5	3-3/8" LANTERN RING	* 889	BGS 001-027585-999	-	1	CYLINDER HEAD WRENCH
===== F O L L O W E R =====					* 890	BGS 998-016330-017	-	1	VALVE SEAT PULLER FOR ITEM 801 AND 823
707	BGS 001-024974-XXX	B, S	5	2-3/4" FOLLOWER	<u>Formed Disc, Stainless Steel</u>				
	BGS 001-011188-XXX	B, S	5	3" FOLLOWER	822	BGS 998-810013-018	-	10	COMPLETE VALVE ASSEMBLY
	BGS 001-011190-XXX	B, S	5	3-1/4" FOLLOWER	Valve Assembly Includes The Following Items:				
	BGS 001-024977-XXX	B, S	5	3-3/8" FOLLOWER	823	BGS 001-008245-263	SS	1	SEAT
===== P A C K I N G S E T S T Y L E 8 3 8 =====					824	BGS 001-009014-263	SS	1	DISC
					825	BGS 001-009353-362	-	1	SPRING
					826	BGS 186-170038-263	SS	1	SLEEVE
					827	BGS 001-009352-263	SS	1	RETAINER
					828	BGS 150-012013-263	SS	1	NUT

Last Three Digits XXX
On Parts with Optional Materials, Where XXX is Shown,
Replace XXX with the Following Digits For:

Steel -----	Use <u>220</u>
Bronze -----	Use <u>306</u>
Ductile -----	Use <u>353</u>
Stainless Steel ----	Use <u>263</u>

**BGS HP-165L FLUID END
PARTS LIST
2-3/4" - 3-3/8" X 4-1/2" QUINTUPLEX PLUNGER PUMP**

ITEM NO.	PART NUMBER	MATL. AVAIL.	QTY	PART DESCRIPTION	ITEM NO.	PART NUMBER	MATL. REQ'D AVAIL.	QTY	PART DESCRIPTION
----------	-------------	--------------	-----	------------------	----------	-------------	--------------------	-----	------------------

720	BGS 218-234318-370	-	5	2-3/4" PACKING
	BGS 218-300281-370	-	5	3" PACKING
	BGS 218-314214-370	-	5	3-1/4" PACKING
	BGS 181-200214-370	-	5	2" PACKING
	BGS 218-338214-370	B, S	5	3-3/8" PACKING

Material Available

- B - Bronze
- B - Dectile Iron
- B - Steel
- SS - Stainless Steel
- No Material Selection Necessary

===== PACKING SET STYLE 255 =====

723	BGS 437-234438-395	-	5	2-3/4" PACKING
	BGS 437-300438-395	-	5	3" PACKING
	BGS 437-314312-395	-	5	3-1/4" PACKING
	BGS 437-338312-395	-	5	3-3/8" PACKING
* 715	BGS 170-018002-220	B, S	5	PLUG (Replaces Lube fitting when using Style 255 packing)

Note: When Ordering Parts, Give:

- | | |
|-----------------------|----------------|
| 1) Pump Serial Number | 5) Part Name |
| 2) Pump Model Number | 6) Item Number |
| 3) Part Number | 7) Trim Size |
| 4) Quantity | 8) Material |